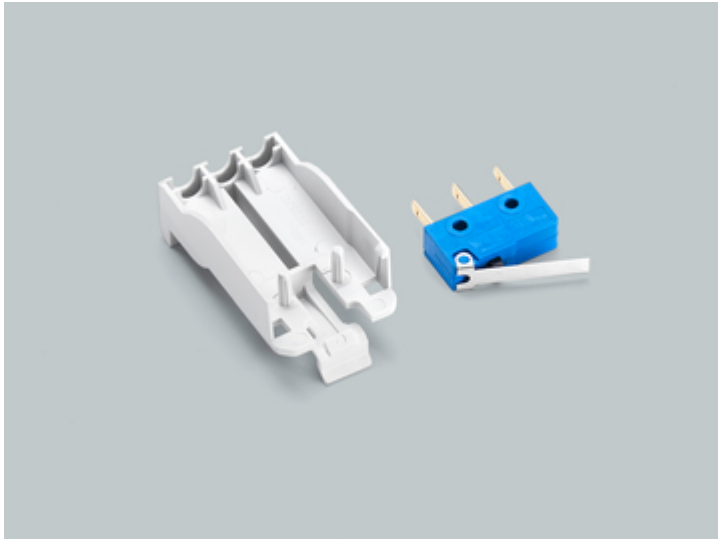


pilot switch (33 642)



Description

Article

Part No.: 33 642

pilot switch

changeover 250V AC / 5A, 30V DC / 4A

Speed Size 00, 1, 2, 3

NEW

System

185Power

Product group 18

Subgroup 70

pack size 1

EAN 4021267336424

eCl@ss 6.1 27142190

eCl@ss 7.1 27142190

ETIM 4.0 EC002936

ETIM 5.0 EC002936

Approvals

Standards

IEC 60947-1:2007 + A1:2010 + A2:2014

IEC 60947-3:2008 + A1:2012

Product data

Electrical data

Power dissipation:

The power dissipation at a typical load of 80% of the rated current results to 0 W.

(The power dissipation for operation with rated current would be 0 W.)

short-circuit withstandbility:	not applicable, since the product does not contain or carry any live parts or is not stressed in the case of a short-circuit
-----------------------------------	---------------------------------------------------------------------------------------------------------------------------------

Mechanical data

Weight: 2.9 kg/100