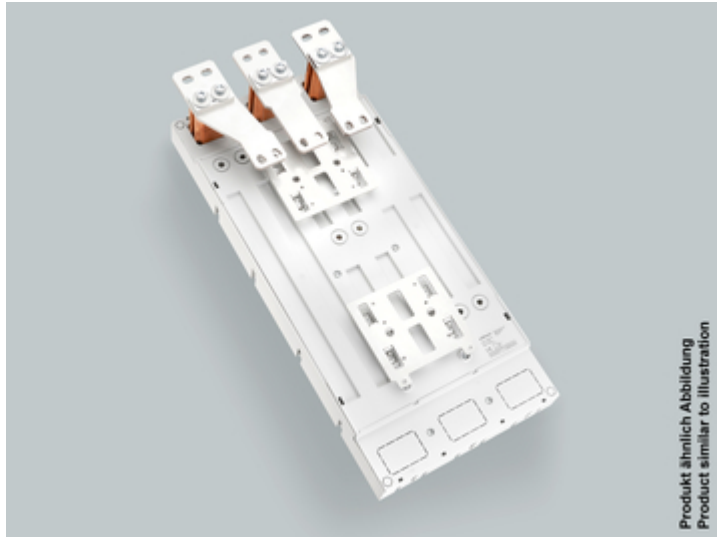


adapter 1440 A (32 761)



Description

Article

Part No.: 32 761

EQUES[®] 185Power

adapter 1440 A

for Siemens 3VL8 1600 A, Eaton NZM4 1600 A

300 x 652, connection top, clamp connection

for busbars 30, 40, 60, 80, 100, 120 x 10

System

185Power

Product group 05

Subgroup 48

pack size 1

EAN 4021267327613

Catalog page 2015 : 4/4

eCl@ss 6.1 27370304
eCl@ss 7.1 27370304
ETIM 4.0 EC001531
ETIM 5.0 EC001531

Approvals

Standards

IEC 61439-1:2011

Type number: EQ185-A1600

CCC approval: no certification required

Product data

Electrical data

Rated current (IEC): 1,440 A

Rated voltage (IEC) AC: 690 V

Power dissipation:

The power dissipation at a typical load of 80% of the rated current results to 350.7 W.

(The power dissipation for operation with rated current would be 548 W.)

rated isolation voltage U_i (AC): 1000
V

Rated surge voltage U_{imp} : 12 kV

max. permitted voltage (IEC) AC: 1000
V

short-circuit withstandability: the MCCB gives the short-circuit protection to the adapter

with Siemens 3VL8 up to 1320A only !

Mechanical data

W x H x D: 300 x 652 x 85

Weight: 3,060 kg/100

Poles: 3-pole

for busbars: 30, 40, 60, 80, 100, 120 x 10

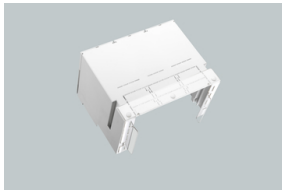
Material properties

Body: temperature stability 130°C,
self-extinguishing in acc. to UL 94,
creepage resistance CTI 600,
halogen-free

Reference

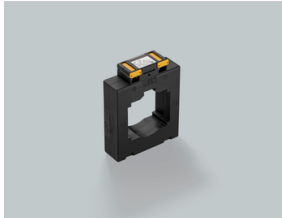
Ausreichend Platz für 2x3 Stromwandler vorhanden.

Accessories



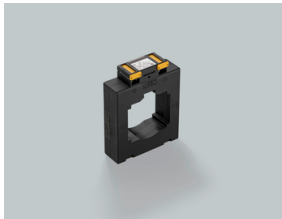
32 703

IP20 Protection cover (front) for adapter
for Siemens 3VL7 1000 A/1250 A, 3VL8 1600 A, incl. 3 top covers
300mm wide



32 983

Current transformer 630 A / 5 A
5 VA / class 1
for adapter 185Power



32 984

Current transformer 800 A / 5 A
5 VA / class 1
for adapter 185Power



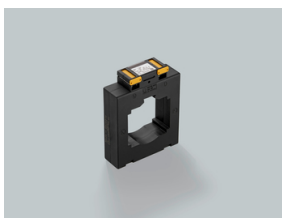
32 985

Current transformer 1000 A / 5 A
5 VA / class 1
for adapter 185Power



32 986

Current transformer 1250 A / 5 A
5 VA / class 1
for adapter 185Power

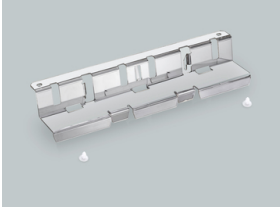


32 987

Current transformer 1600 A / 5 A
5 VA / class 1
for adapter 185Power

**32 701**

IP20 Protection cover (front) for adapter
for Eaton NZM4, Legrand DPX³ 1600, GE FK1600, incl. 3 top covers
300mm wide

**32 704**

Touch-safe protection shroud IP20 (rear installation)
for all adapters

NEW