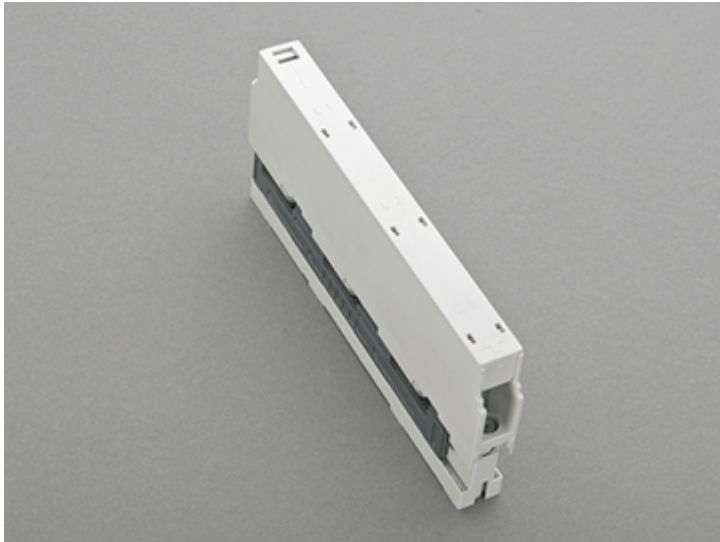


terminal busbar support (01 484)



Description

Article

Part No.: 01 484

terminal busbar support

3-pole, with integrated terminals 1.5 - 16 mm²

for busbars 12, 15, 20, 25, 30 x 5, 10

System

60Classic

Product group 06

Subgroup 09

pack size 10

EAN 4021267014841

Advantages of the product

Connection busbar support with integrated terminals for feeding or tapping the busbar with internal screw holes, can also be used as centre support.

Catalog page 2015 : 2/1, 2/6

eCl@ss 6.1 27400607
eCl@ss 7.1 27400607
ETIM 4.0 EC001166
ETIM 5.0 EC001166

Approvals

Standards

IEC 61439-1:2011

CCC approval: no certification required

Product data

Electrical data

Rated current (IEC): 80 A
Rated voltage (IEC) AC: 690
V

Power dissipation:

The power dissipation at a typical load of 80% of the rated current results to 0.5 W.
(The power dissipation for operation with rated current would be 0.8 W.)

current carrying capacity (IEC) max.: 80 A

Rated surge voltage U_{imp} : 6 kV
max. permitted voltage (IEC) AC: 1000
V
max. permitted voltage (IEC) DC: 1500
V

Current capacity of the clamping point 80A

short-circuit withstand rating:

surge current strength > 30kA at busbar support separation of 550mm

surge current strength > 50kA at busbar support separation of 250mm

further values in the short-circuit withstand rating diagram

Mechanical data

W x H x D: 20 x 202 x 87

Weight: 25.6 kg/100

Poles: 3-pole

for busbars: 12, 15, 20, 25, 30 x 5, 10

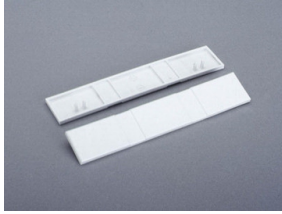
Material properties

Main body: temperature stability 125°C,
self-extinguishing in acc. to UL 94,
creepage resistance CTI 600,
halogen-free

Screws: screw +/- (PZ2), galvanized, chromized

Handle: temperature stability 125°C,
self-extinguishing in acc. to UL 94,
creepage resistance CTI 600

Accessories



01 573

end cover

for busbar supports 01 484, 01 495, 01 500, 01 508 and 01 603