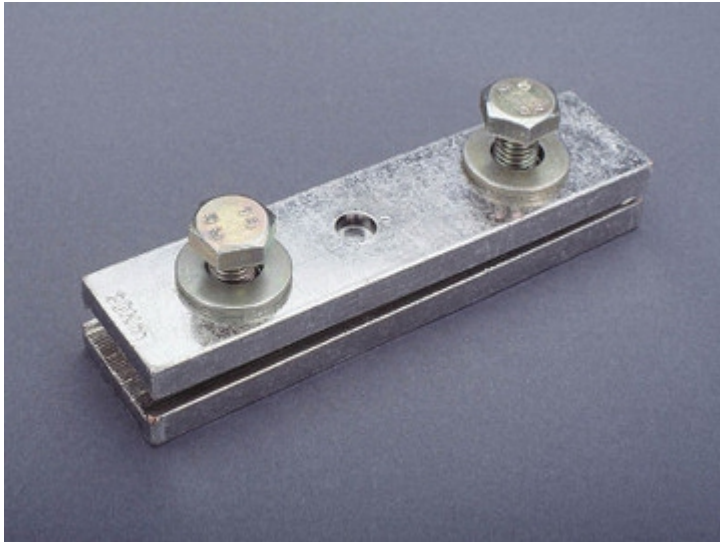


## busbar connecting terminal 630 A (01 886)



### Description

#### Article

Part No.: 01 886

busbar connecting terminal 630 A

150 mm long

for busbars 20, 25, 30 x 5, 10

#### System

60Classic

Product group 07

Subgroup 33

pack size 3

EAN 4021267018863

Catalog page 2015 : 2/10

eCl@ss 6.1 27400606  
eCl@ss 7.1 27400606  
ETIM 4.0 EC000713  
ETIM 5.0 EC000713

## Approvals

### Standards

IEC 61439-1:2011

### Approvals

UL, Germanischer Lloyd



for UL feeder circuits >250V

Type number: LV30-L

UL file: E123577, UL category (for USA): NMTR <http://www.ul.com>

UL file: E123577, UL category (for Canada): NMTR7 <http://www.ul.com>

CCC approval: no certification required

## Product data

### Electrical data

Rated voltage (IEC) AC: 690  
V

Power dissipation:

The power dissipation at a typical load of 80% of the rated current results to 1.3 W.

(The power dissipation for operation with rated current would be 2 W.)

current carrying capacity (IEC) max.: 630 A

max. permitted voltage (IEC) AC: 1000  
V

max. permitted voltage (IEC) DC: 1000  
V

SCCR: 25 kA

### **Mechanical data**

W x H x D: 150 x 37 x 25

Weight: 86.6 kg/100

for busbars: 20, 25, 30 x 5, 10

2 clamp screws M12

tightening torque 30Nm

permitted busbar displacement: 5

permitted spacing between systems: 100 - 110 mm

### **Material properties**

Screws: Hexagon screw M12, length across flats 19

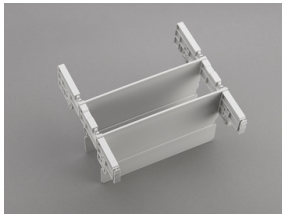
Terminal body: Copper, tinned

Terminal body: Cu section, nickel-plated, for bridging the system separation, screws: hexagonal screws M12 with slot, galvanised, chromited

### **Reference**

Max. permitted busbar offset 5mm, 3 units are needed for a 3-pole connection.

## Accessories



### **01 362**

Set of phase separators for UL installation, 3-pole  
for connections 01 886, 01 829, 01 275  
200 mm