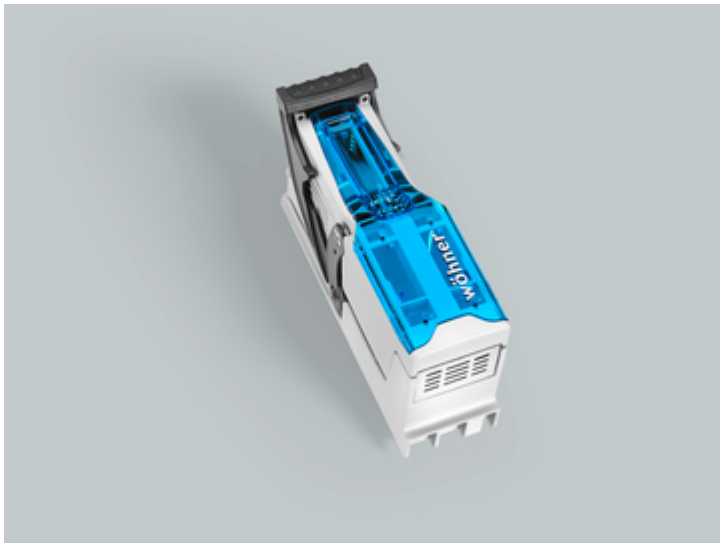


NH fuse switch-disconnector size 000, 125 A,
connection top / bottom (33800)



Description

Article

Part No.: 33800

QUADRON®CrossBoard

NH fuse switch-disconnector size 000, 125 A, connection top / bottom
box terminal

with CrossLink® interface

NEW

System

CrossBoard®

Product group 09

Subgroup 20

pack size 1

EAN 4021267338008

Advantages of the product

Self-closing inspection holes are available in the cover.

catalog page 2019 : 1.1

eCl@ss 6.1 27142108

eCl@ss 7.1 27142108

ETIM 4.0 EC001040

ETIM 5.0 EC001040

Approvals

Standards

IEC 60947-1:2007 + A1:2010 + A2:2014

IEC 60947-3:2008 + A1:2012 + A2:2015

GB/T 14048.3

type number: QU-NH000

Product data

for fuse-links size: NH 000
fuse-link acc. to standard: IEC / HD 60269-2
permitted power dissipation of the fuse-link: 9 W

Details IEC

Standards

IEC 60947-1:2007 + A1:2010 + A2:2014

IEC 60947-3:2008 + A1:2012 + A2:2015

GB/T 14048.3

Electrical data IEC

Rated current (IEC): 125 A

rated voltage (IEC) AC: 690 V

rated voltage (IEC) DC: 440
V

rated isolation voltage U_i AC: 800
V
rated isolation voltage U_i DC: 500
V
rated surge voltage U_{imp} : 6 kV

Utilisation category AC (IEC 60947-3): AC-21B (690 V / 80 A)
AC-22B (400 V / 125 A)

cond. short-circuit current with fuses (AC): 50 kA / 690 V (80 A)
80 kA / 400 V (125 A)
100 kA / 400 V (100 A)
approved with fuse links of operation class: gG

power dissipation of the article:

The power dissipation at a typical load of 80% of the rated current results to 6.7 W.
(The power dissipation for operation with rated current would be 10.5 W.)

Supplementary data IEC

The following values have been verified with tests under certain conditions. Please ask Wöhner for this conditions before designing your panel.

max. permitted voltage (IEC) DC: 800
V

A fuse-combination unit acc. to IEC 60947-3 can only be operated at a higher voltage than its rated voltage, if it is used as a fuse-disconnector without breaking capacity, up to its max. rated insulation voltage and labelled as such.

for fuse links IEC 60269-2-1 / DIN VDE 0636-201 size 000 (max. 21mm wide)

In accordance with the specified AC and DC switching properties and in consideration of the overload conditions, certain distances to earthed metal parts are to be adhered to. detailed information upon inquiry

When several devices are used side-by-side in continuous operation, the rated load factor specified in IEC / EN 61439-1, Table 1, must be observed.

Mechanical data

W x H x D: 49.5 x 174.5 x 96

weight: 41.5 kg/100

poles: 3-pole

front degree of protection: IP30

type of fastening: patented click mechanism

Terminal points

box terminal:

2.5 - 50 mm² flexible and flexible with wire-end ferrules*

2.5 - 16 mm² solid round

2.5 - 50 mm² stranded round

Terminal space 10 mm x 10 mm

(*flexible cables of maximum cross-section may not fit when using wire-end ferrule)