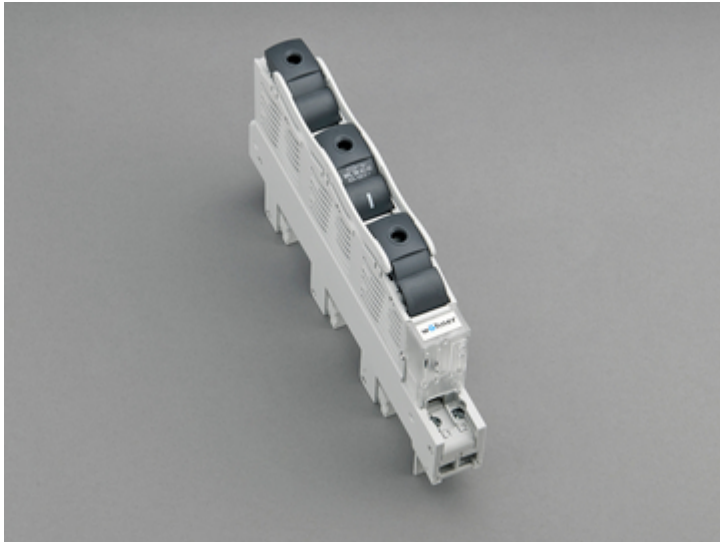


## bus-mounted fuse switch (31 158)



### Description

#### Article

Part No.: 31 158

SECUR<sup>®</sup> 60Classic

bus-mounted fuse switch

for fuse links D01 and D02

E18 / 63 A / 3P

for busbars 12, 15, 20, 25, 30 x 5, 10 and section busbars

#### System

60Classic

Product group 01

Subgroup 42

pack size 1

EAN 4021267311582

Catalog page 2015 : 2/20

eCl@ss 6.1 27142110  
eCl@ss 7.1 27142110  
ETIM 4.0 EC000277  
ETIM 5.0 EC000277

## Approvals

### Standards

IEC 60947-1:2007 + A1:2010 + A2:2014

IEC 60947-3:2008 + A1:2012

DIN 57638/09.81

### Approvals

VDE



Type number: SPL-D0

## Product data

### Electrical data

Rated current (IEC): 63 A

Rated voltage (IEC) AC: 400  
V

Rated voltage (IEC) DC: 110  
V

Utilisation category AC (IEC 60947-3): AC-23A (400 V)

Utilisation category DC (IEC 60947-3): DC-21B (48 V) 1 Pol  
DC-21B (110V) 2 Pole

Power dissipation:

The power dissipation at a typical load of 80% of the rated current results to 6.7 W.

(The power dissipation for operation with rated current would be 10.5 W.)

rated isolation voltage  $U_i$  (AC): 500  
V  
Rated surge voltage  $U_{imp}$ : 6 kV  
max. permitted voltage (IEC) AC: 800  
V  
max. permitted voltage (IEC) DC: 110  
V

cond. rated short-circuit current with fuses: 50 kA / 400V AC  
approved wth fuse links of characteristics: gG

for fuse links and gauge rings as per DIN VDE 0636-3 IEC / EN 60269-3  
utilisation category as per VDE 0638: AC22

The function of isolation between incoming and outgoing contacts is provided by the opening of the switching mechanism as required in the standard.

#### **Mechanical data**

W x H x D: 27 x 220 x 104  
Weight: 75.9 kg/100  
Poles: 3-pole  
for busbars: 12, 15, 20, 25, 30 x 5, 10 and section busbars

Type of fastening: patented click mechanism Tightening torque of box terminals 3 Nm

#### **Terminal points**

frame terminal:  
Cu 1,5 - 6 mm<sup>2</sup> round solid  
Cu 1,5 - 16 mm<sup>2</sup> flexible with or without ferrule

## Material properties

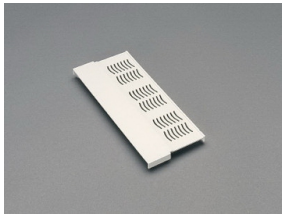
- Body: temperature stability 140°C,  
self-extinguishing in acc. to UL 94,  
creepage resistance CTI 225,  
silicon-free, halogen-free
- Handle: temperature stability 125°C,  
self-extinguishing in acc. to UL 94,  
creepage resistance CTI 200
- Fuse carrier: temperature stability 150°C,  
self-extinguishing in acc. to UL 94,  
creepage resistance CTI 125,  
halogen-free
- Cover: temperature stability 125°C,  
 fire behaviour UL 94 HB,  
 creepage resistance CTI 200,  
 halogen-free
- Connecting screws: screw +/- (PZ2), galvanized, chromized

## Reference

SECUR®PowerLiner can be fitted with D0 adapter sleeves. With reducer insert (Part no. 31 902) and adapter sleeves, also suitable for D01 fuse links. Under permanent load above 35A, the use of side-mounted module Part no. 31 901 is recommended.

use D0 fuse links with silver plated caps

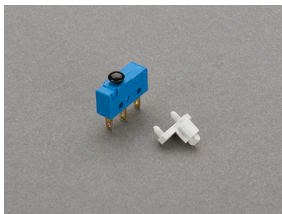
## Accessories



**31 901**  
side-mounted module



**31 902**  
reducer for D01 fuses



**31 903**  
pilot switch  
changeover 250 V AC / 5 A; 30 V DC / 4 A