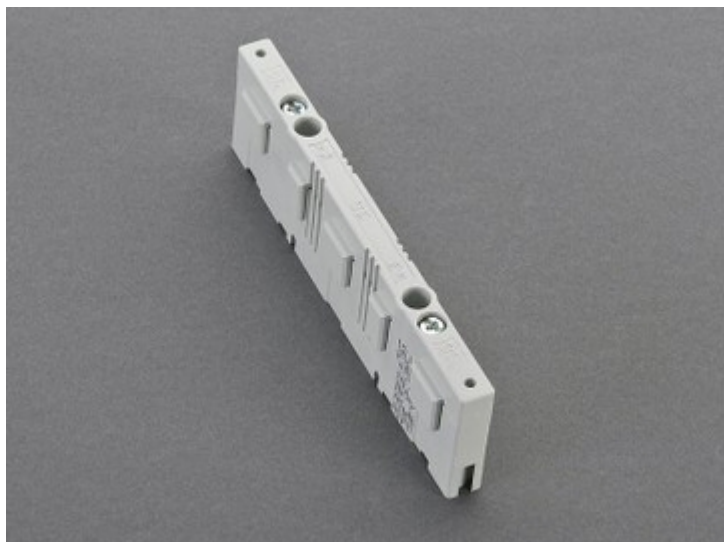


busbar support 3 phases + N + E, with end cover (01 272)



Description

Article

Part No.: 01 272

busbar support 3 phases + N + E, with end cover

for busbars 12x5 and 3-pole also 12x10

for busbars 12x5; 3P also 12x10

for busbars 12 x 5; 3P also 12 x 10

System

30Compact 3P

30Compact 5P

Product group 06

Subgroup 09

pack size 10

EAN 4021267012724

Catalog page 2015 : 1/1, 1/5

eCl@ss 6.1 27400607
eCl@ss 7.1 27400607
ETIM 4.0 EC001166
ETIM 5.0 EC001166

Approvals

Standards

IEC 61439-1:2011

Approvals

UL



for UL feeder circuits >250V

Type number: S612-L

UL file: E123577, UL category (for USA): NMTR <http://www.ul.com>

UL file: E123577, UL category (for Canada): NMTR7 <http://www.ul.com>

CCC approval: no certification required

Product data

Electrical data

Rated voltage (IEC) AC: 690
V

Rated voltage (UL) AC: 600
V

Power dissipation:

The power dissipation at a typical load of 80% of the rated current results to 0 W.

(The power dissipation for operation with rated current would be 0 W.)

Rated surge voltage U_{imp} : 6 kV
max. permitted voltage (IEC) AC: 1000
V
max. permitted voltage (IEC) DC: 1500
V

short-circuit capacity IEC / EN :

3-pole: $I_{pk} = \min. 36\text{kA}$ (2 busbar supports in 400mm distance)

go to calculation for [3-pole system \(IEC\)](#)

4- and 5-pole : $I_{pk} = 18\text{kA}$ (2 busbar supports in 400mm distance)

go to calculation for [5-pole system \(IEC\)](#)

short-circuit capacity UL :

3-pole: $SCCR = 18\text{ kA}$ (2 busbar supports in 400mm distance)

go to calculation for [3-pole system \(UL\)](#)

Mechanical data

W x H x D: 12.5 x 156 x 45

Weight: 6.8 kg/100

Poles: 3-pole

for busbars: 12 x 5; 3P also 12 x 10

Material properties

Main temperature stability 125°C,

body: self-extinguishing in acc. to UL 94,
creepage resistance CTI 600,
halogen-free

Screws: screw +/- (PZ2), galvanized, chromized

Reference

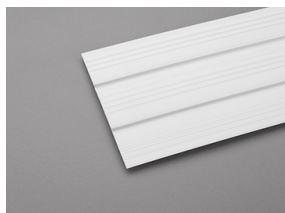
Zur Einhaltung der erhöhten Luft- und Kriechstrecken nach UL 508A ist das Distanzstück 01 374 zu verwenden.

Drehmoment für die Schrauben des Schienenträgerdeckels $M_d = 3\text{Nm}$

Accessories



01 374
fixing piece
suitable for 01 272



01 371
base plate
700 x 160